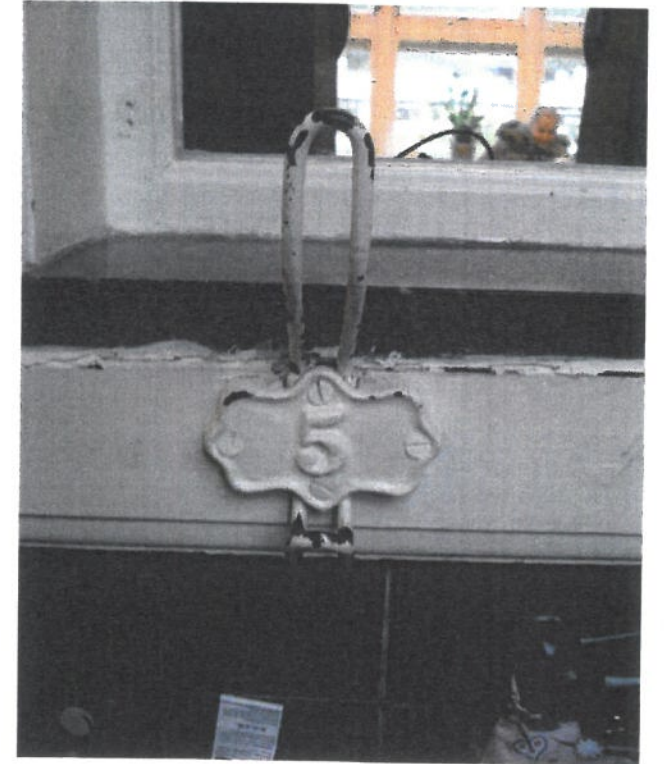
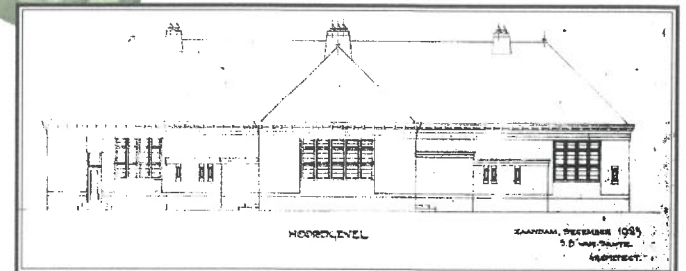
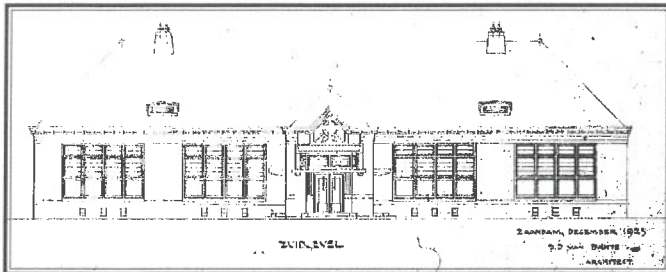
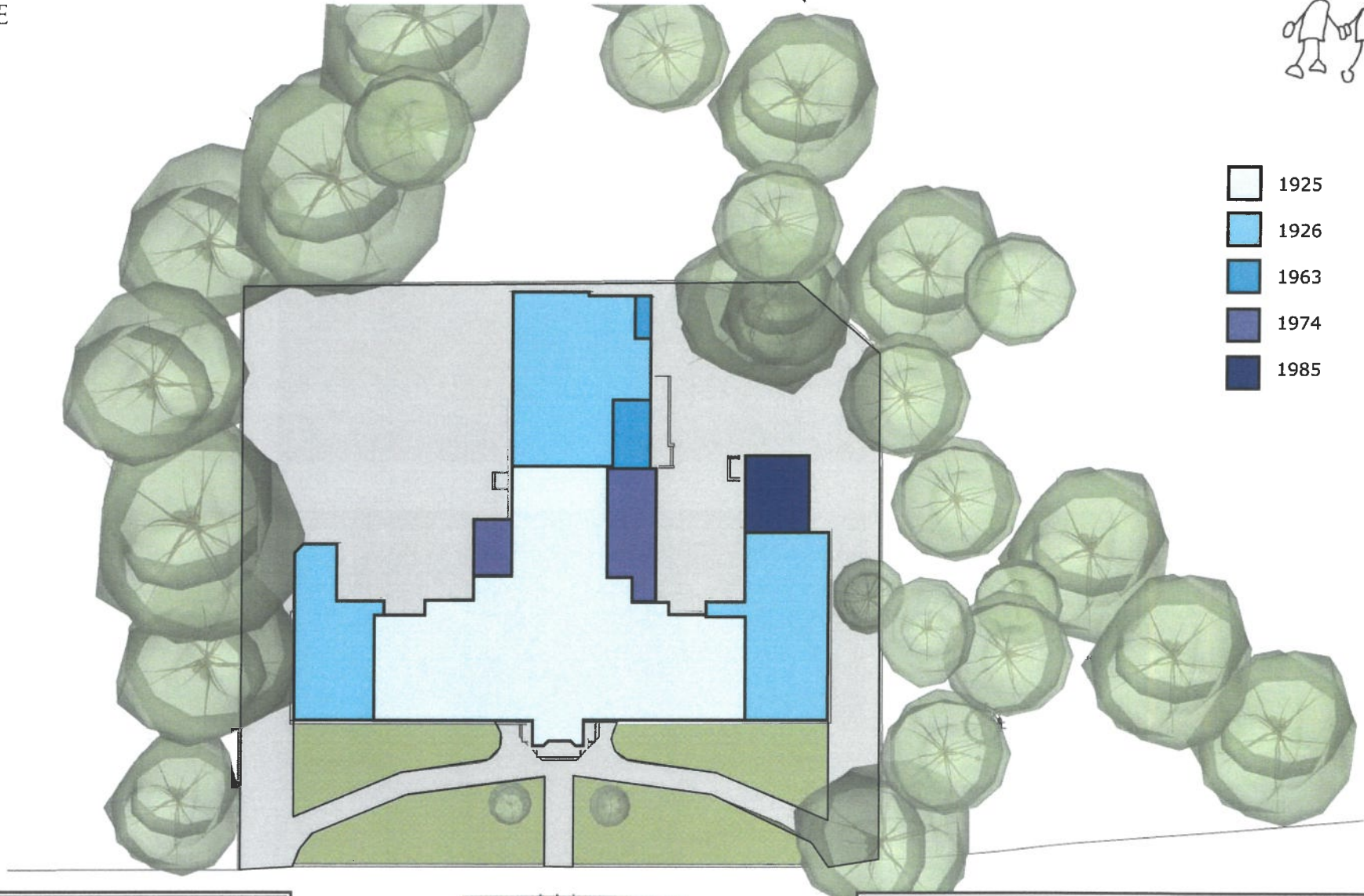
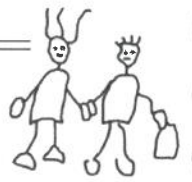


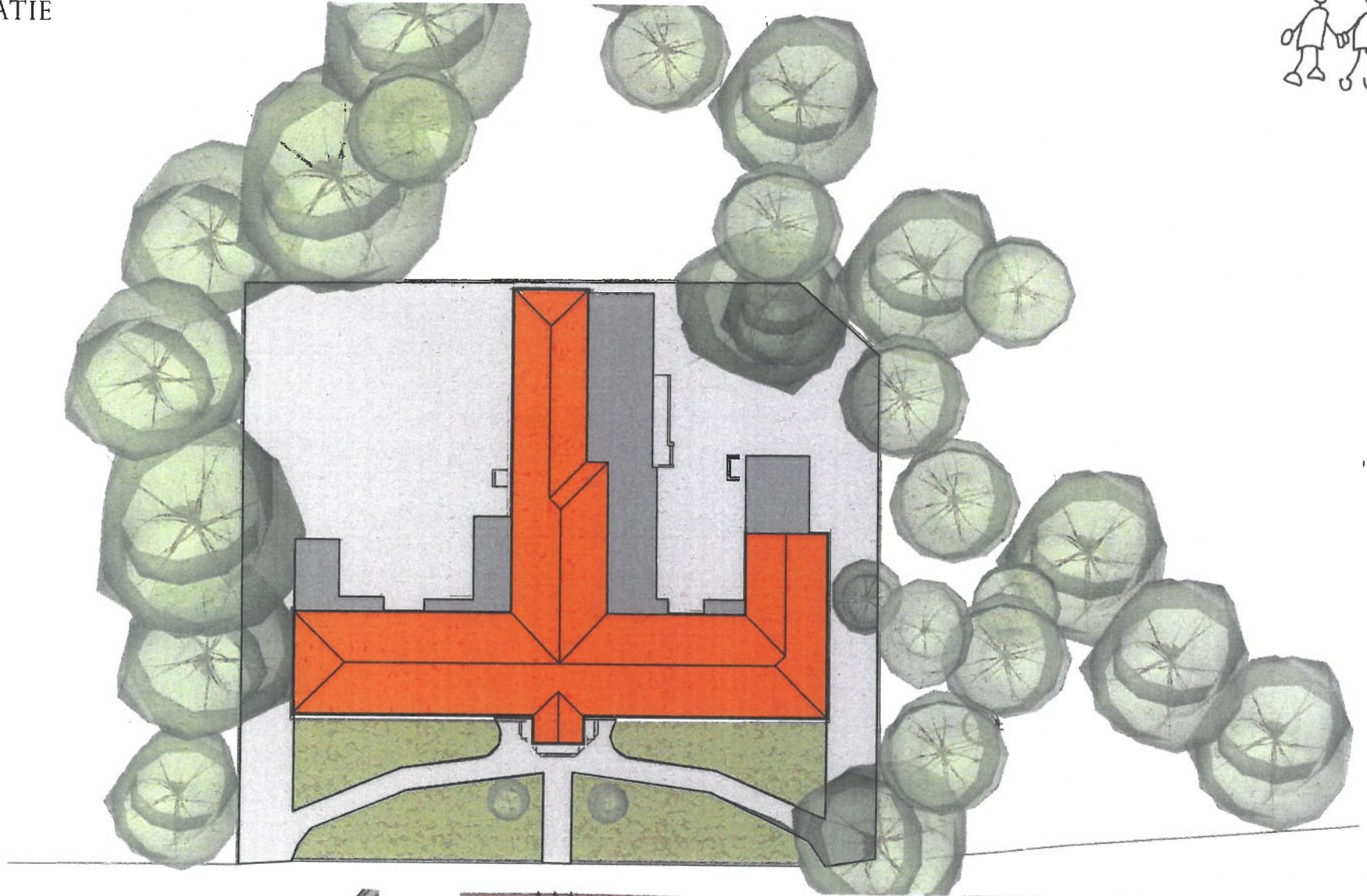
St. Theresiaschool aan de rand van landgoed Dennenheuvel

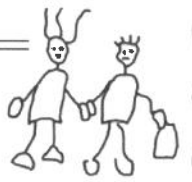
Plannen voor landgoed Dennenheuvel

ST THERESIASCCHOOL BLOEMENDAL









speelplein midden- en
bovenbouw ongewijzigd laten

bestaande bomen

deels verdiepte gymzaal

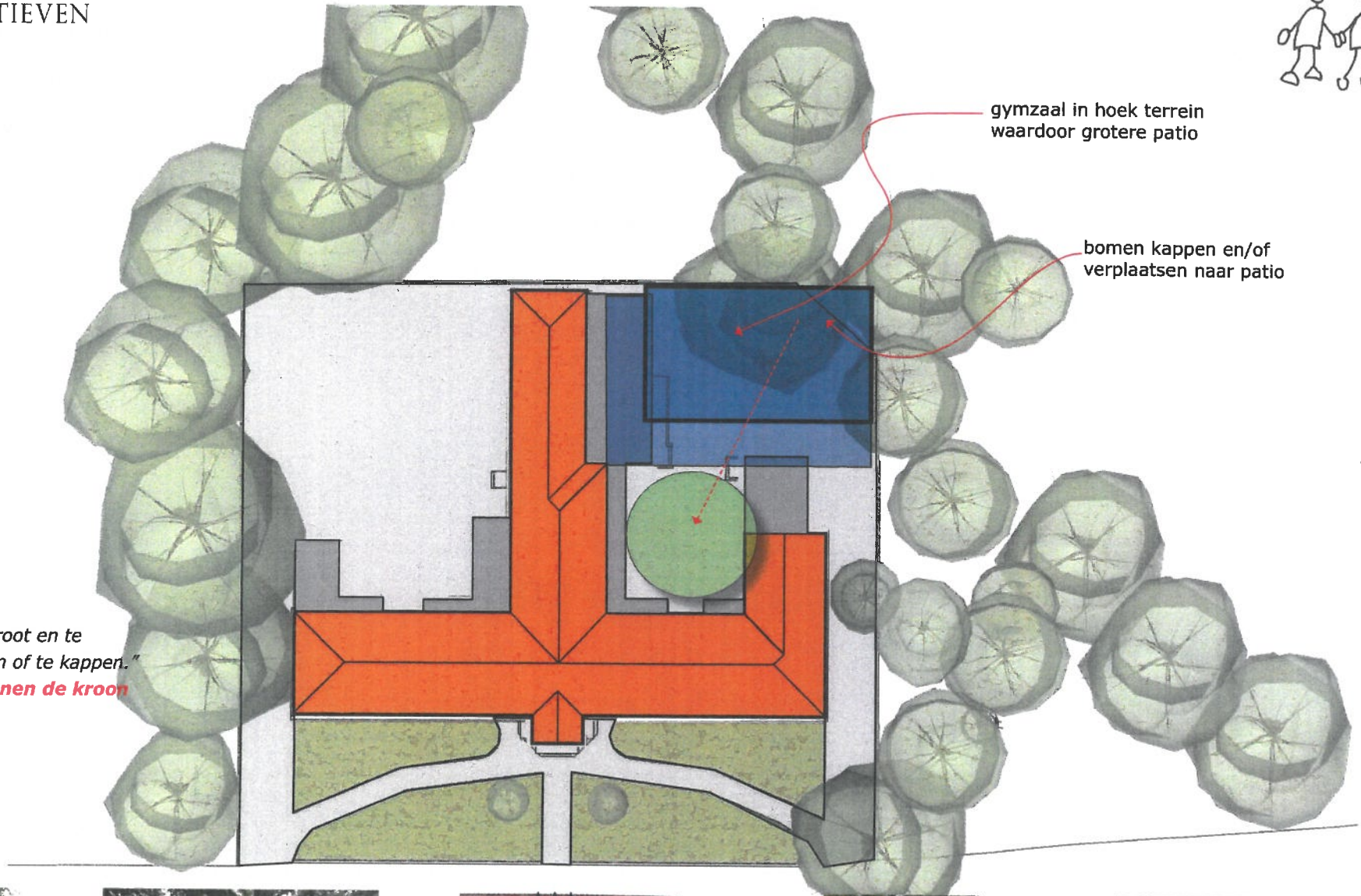
buitentree gymzaal

entree peuterspeelzaal
en onderbouw

patio

deel van zolder inrichten
als personeelsruimten

voorgebied inrichten
als plein onderbouw



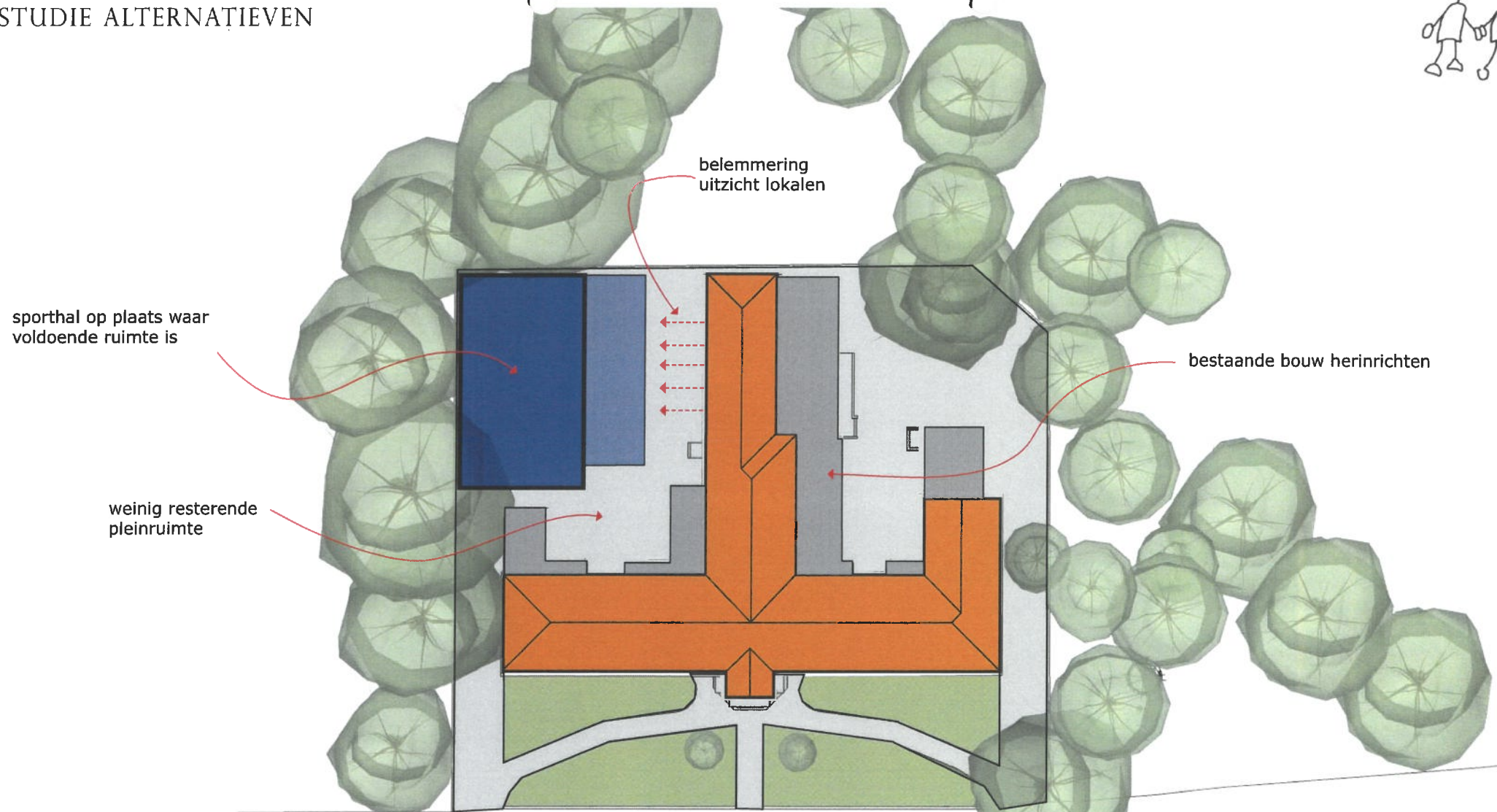
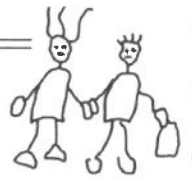
gymzaal in hoek terrein
waardoor grotere patio

bomen kappen en/of
verplaatsen naar patio

Copijn - boomspecialisten:

"Bestaande bomen zijn te groot en te
waardevol om te verplaatsen of te kappen."
advies = niet bouwen binnen de kroon





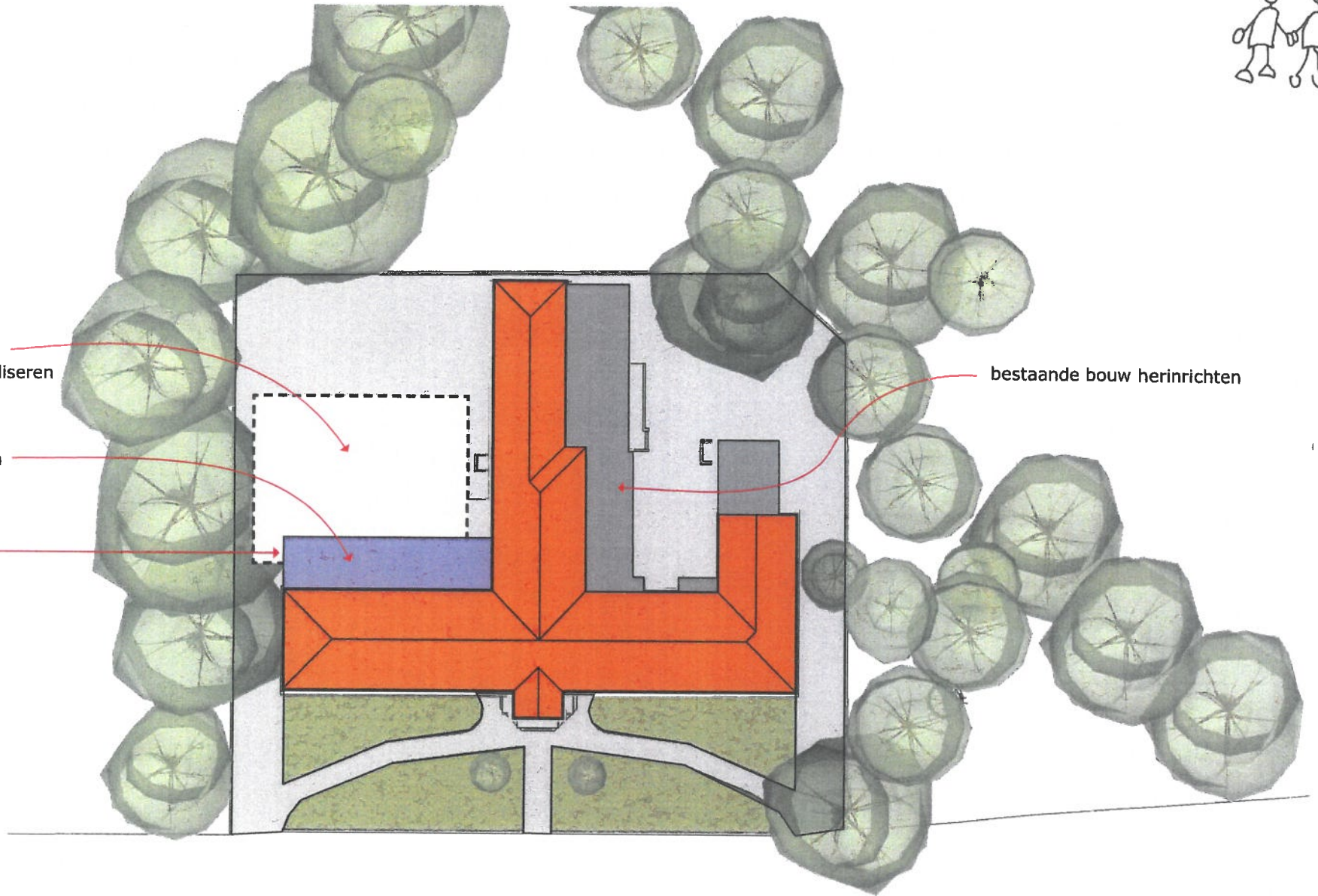


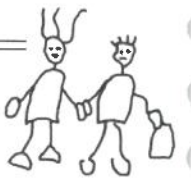
sporthal volledig
ondergronds realiseren

oude aanbouwen
vervangen door
nieuwe aanbouw

buitenentree
gymzaal

bestaande bouw herinrichten





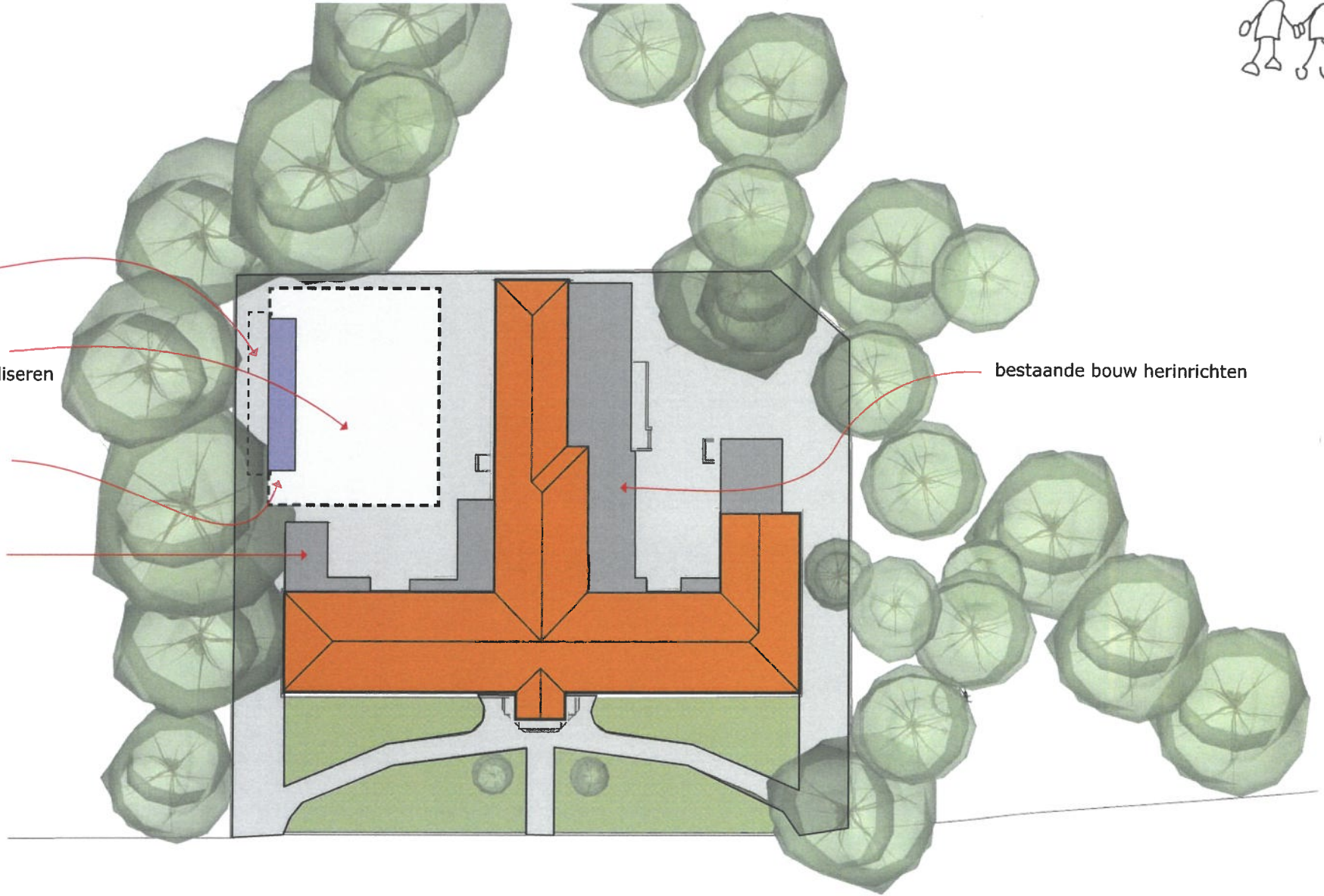
fietsenstalling

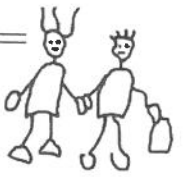
sporthal volledig
ondergronds realiseren

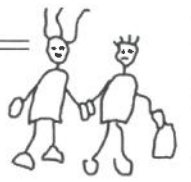
buitentree
gymzaal

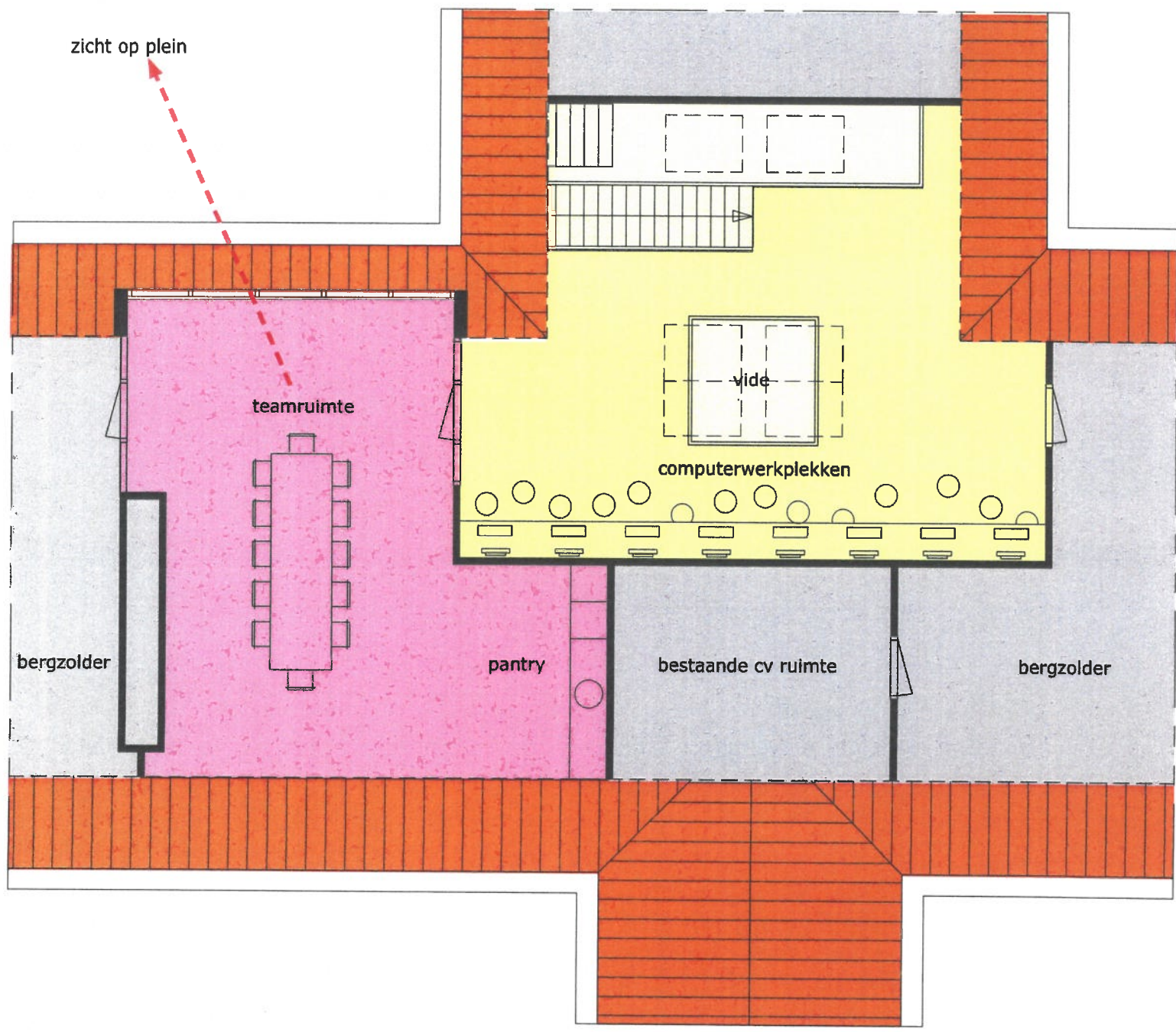
oude aanbouwen
handhaven en
herinrichten

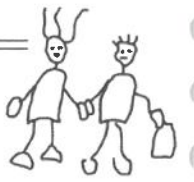
bestaande bouw herinrichten

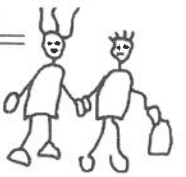


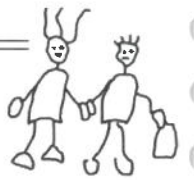




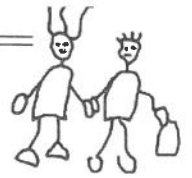


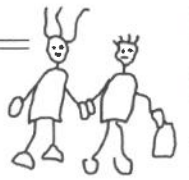


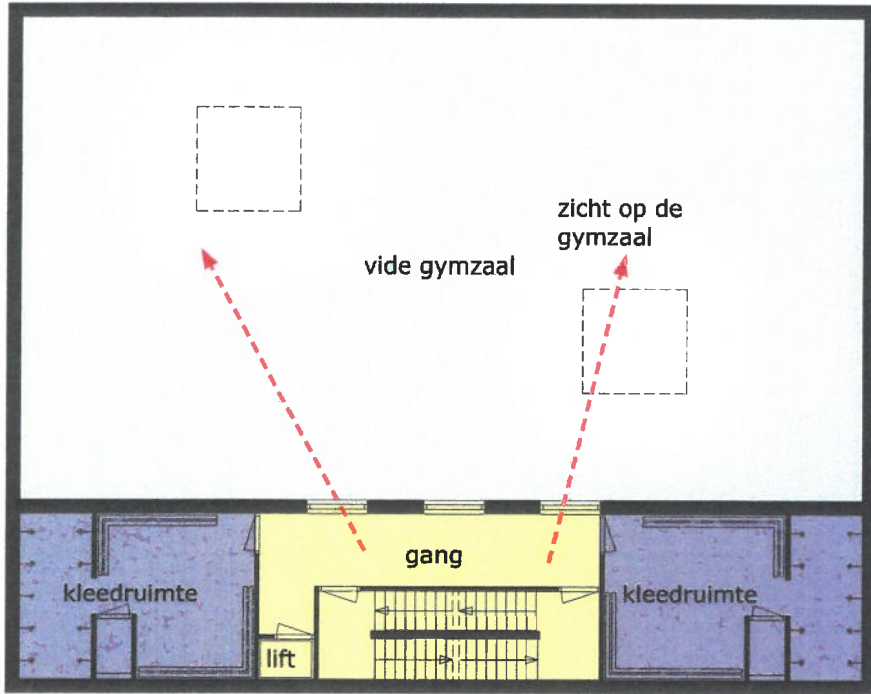




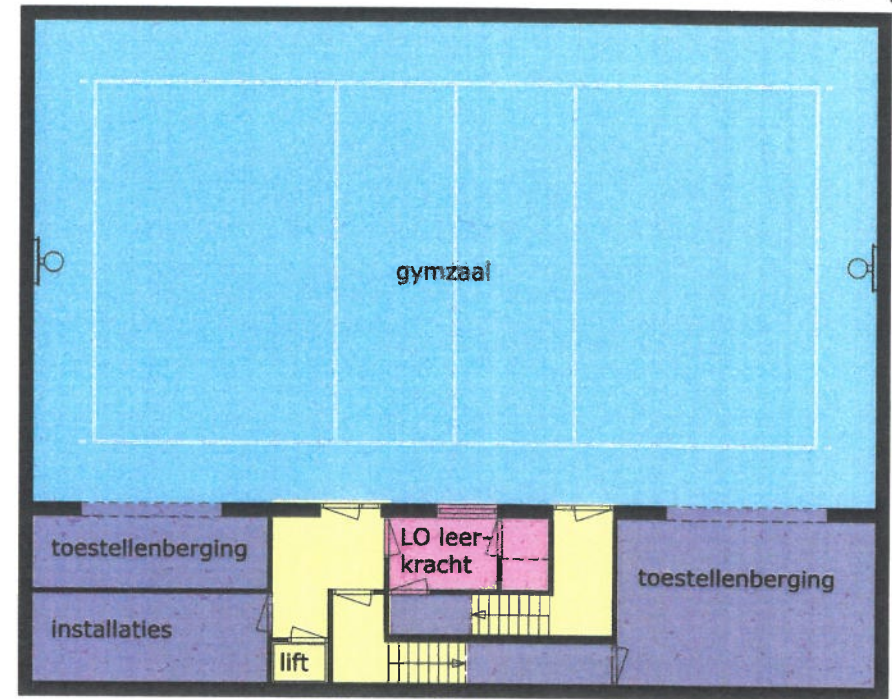
BEGANE GROND



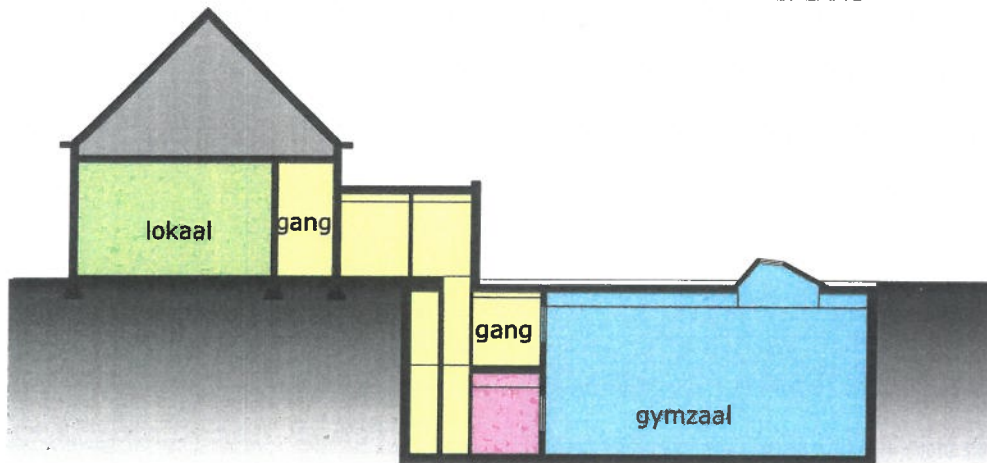




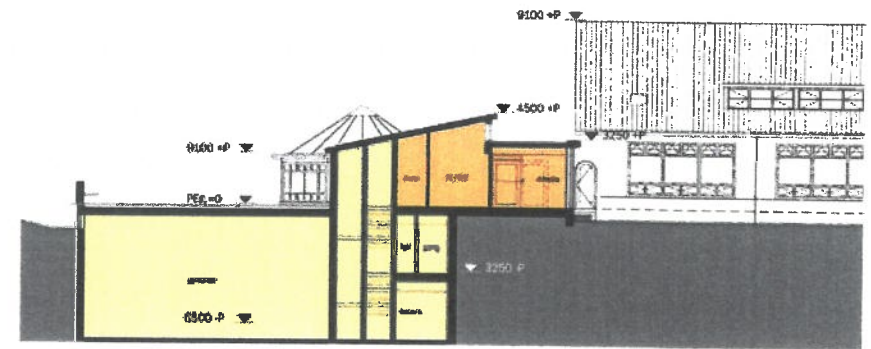
1E KELDERLAAG



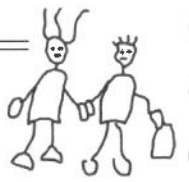
2E KELDERLAAG

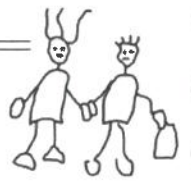


DOORSNEDE

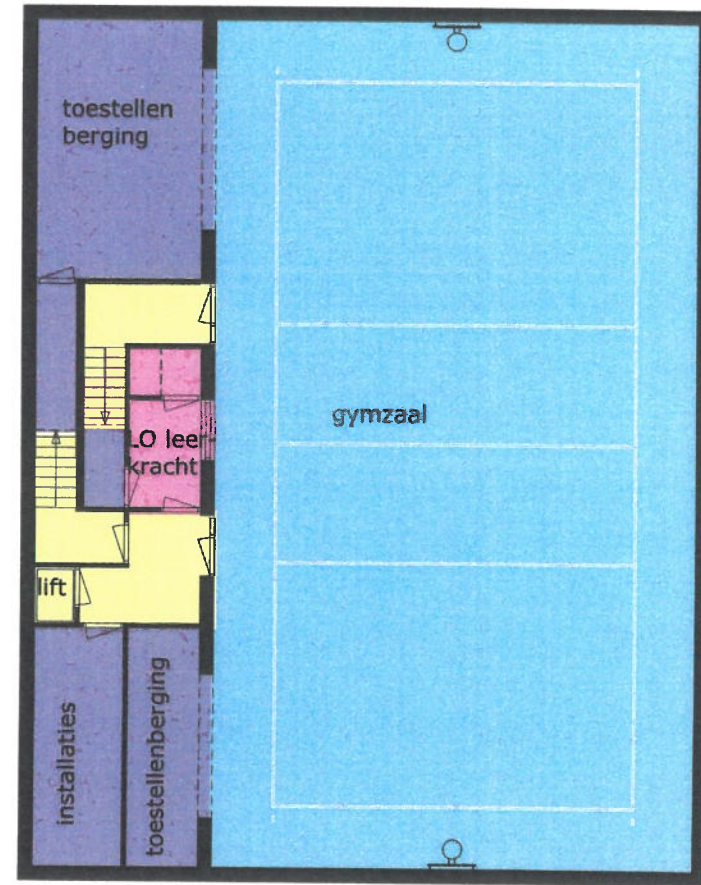
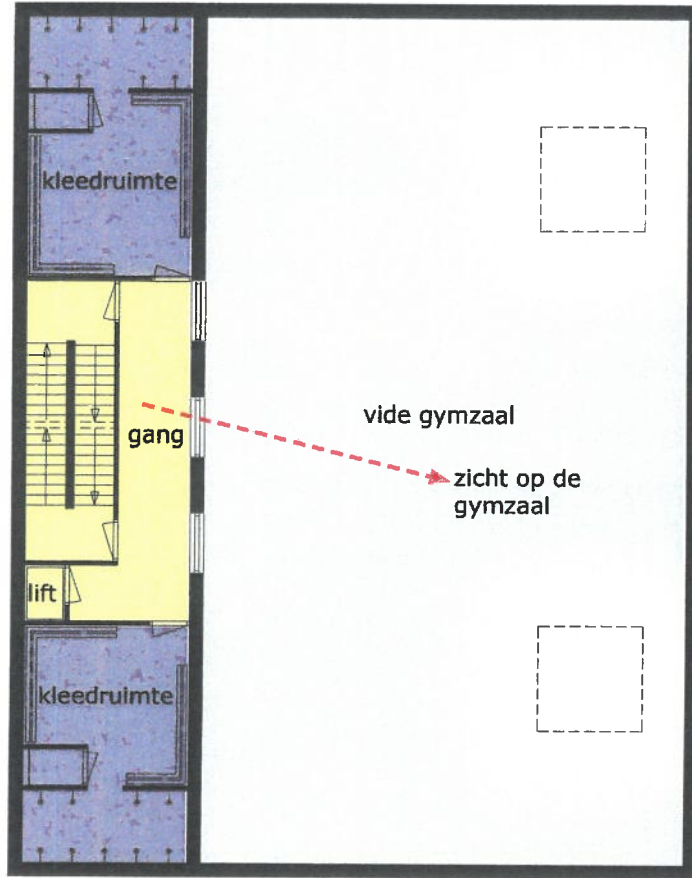


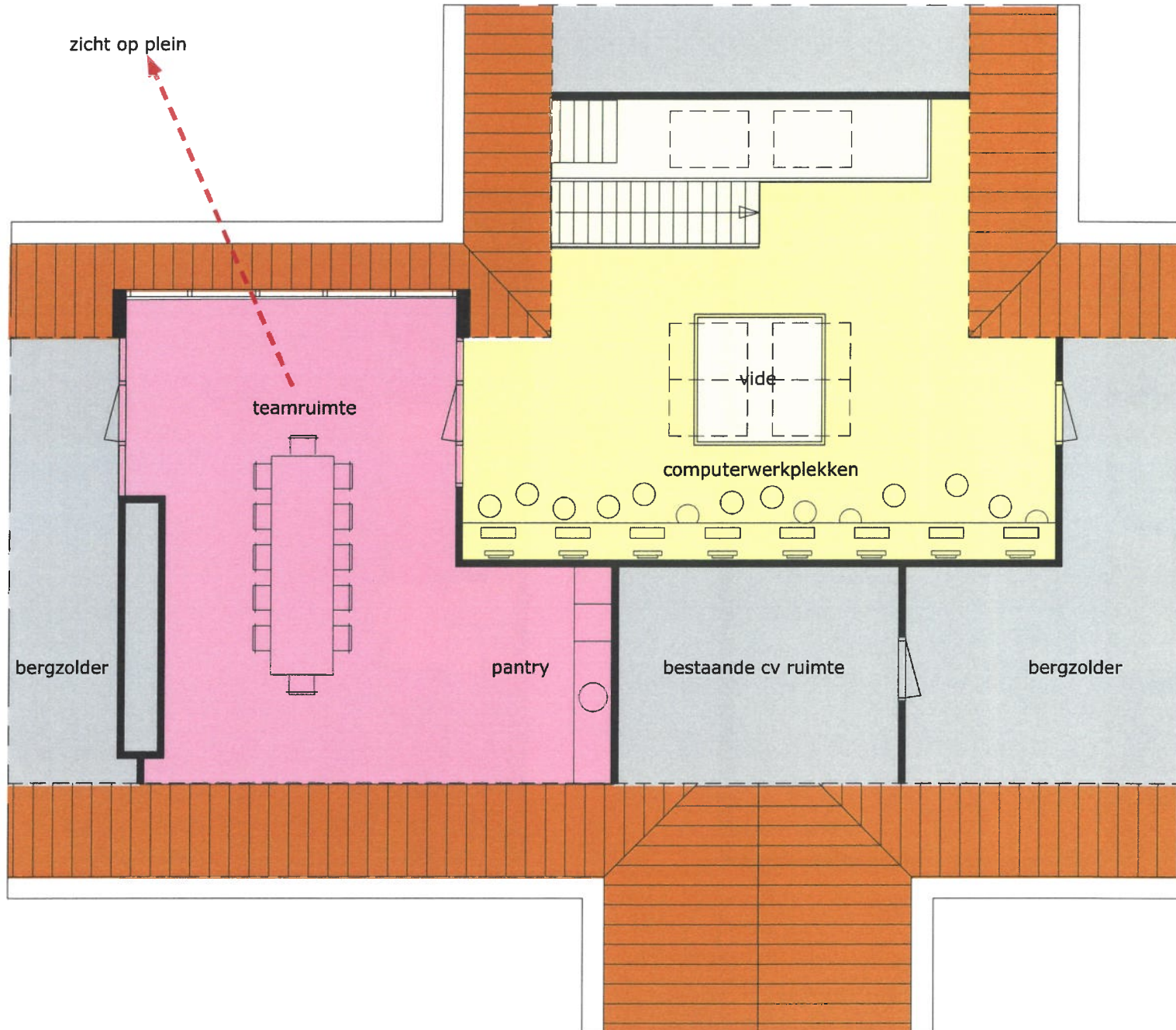
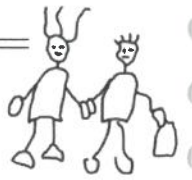
REFERENTIE THIJO VAN EEGHENSCHOOL AERDENHOUT

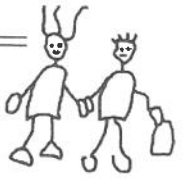


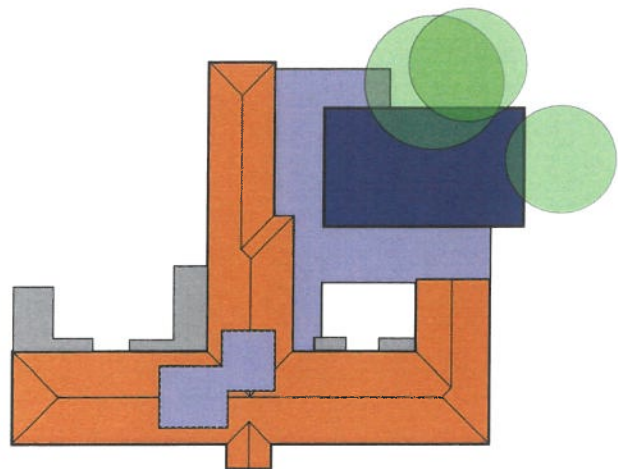
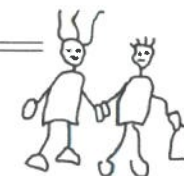


BEGANE GROND MET SPEELLOKAAL

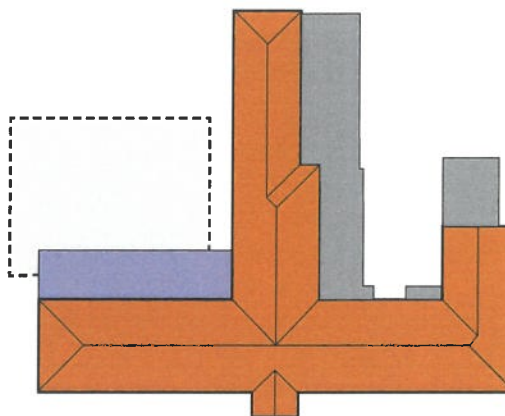




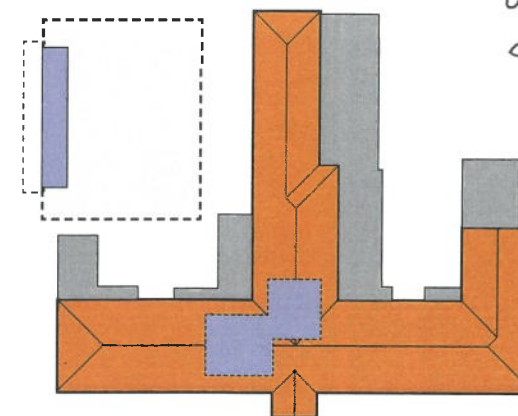




MODEL HOUTKAMP



MODEL TOPOS A



MODEL TOPOS B

	MODEL HOUTKAMP	MODEL TOPOS A	MODEL TOPOS B
mate van ingrepen in bestaande gebouw	hoog	laag	gemiddeld
behoud oorspronkelijke uitstraling	-/-	+/+	+/+
alle functies op de begane grond	nee	ja	nee
pleinruimte	-/-	+/+	+/+
tijdelijke huisvesting nodig	ja	nee	nee
behoud bomen	???	ja	ja
grotere gymzaal mogelijk (22x14m)	nee	ja	ja
gymzaal binnendoor bereikbaar	ja	ja	nee
omvang van aula	-/-	+/+	+/-
buitenonderhoud	-/-	+/+	+/+
passieve koeling	-/-	+/+	+/+
passend binnen bestemmingsplan	nee	ja	ja
bouwkosten (exclusief tijdelijke huisvesting)	basis	+ 9%	+ 3%